

History of the Olympic Games ...

from Beijing 2008 to Mexico City 1968
- interviews with champions,
medal tables,
interesting facts!

**LONDON
2012**
cheer on
with Polanik

Carbon in the lead!

we join the elite
of the javelin producers

p.3

Ziolkowski Hammer

at the World
Championships in Daegu

p.10

International

debut of the electronically
driven PV stand

p.35

New offer!

from javelins to footwear
improved product in each group



Polanik
the official partner
and supplier
of the Polish Athletics Federation



Full Carbon Premium Line javelins

The decades of our company's experience in the javelin production have been capped by Full Carbon competition javelins. Those master class javelins have come into being as the result of the two-year work and personal commitment of the company's founder, Wiesław Szczepanik. In the production there have been used extremely durable carbon fibres and special kinds of resins which vastly increase the javelins' rigidity. That lessens the vibrations during flight and guarantees farther throws. Thus Polanik company has joined the selective group of the few producers from all over the world who make carbon fibre javelins. The Polanik Full Carbon javelins are the next products added to the Premium Line which came into existence along with creating excellent class Ziolkowski Hammers. Currently there are two models included in the range: 600 g and 800 g. Only their shank tails are painted, the rest of the shank surface shows a spectacular structure of carbon fibre. In the near future different models with various levels of rigidity, diversified colours, javelin cord types and head constructions will supplement the Full Carbon line.

Code	Description	Certificate
FC11-600	Full Carbon 600 g	IAAF
FC11-800	Full Carbon 800 g	IAAF



Competition javelins

New weights 700g and 600g, high precision of dimensions and weight distribution, high rigidness thanks to duraluminium with modified chemical constitution, parameters at the edge of the IAAF technical allowance give the highest possible range, javelin cotton cord with synthetic core, transparent colours

SPACE MASTER

Top competition model. Ultrathin javelin end, maximal rigidness, sharp head coated with thick layer of zinc, powder paint in electric lime transparent colour



Code	Description	Certificate
SM10-600	Space Master 600 g	IAAF
SM10-700	Space Master 700 g	IAAF
SM10-800	Space Master 800 g	IAAF

SKY CHALLENGER

Model for advanced competitors. Increased rigidness, narrowed shank end, steel galvanized head in a cigar shape. Powder painted shank in red transparent colour



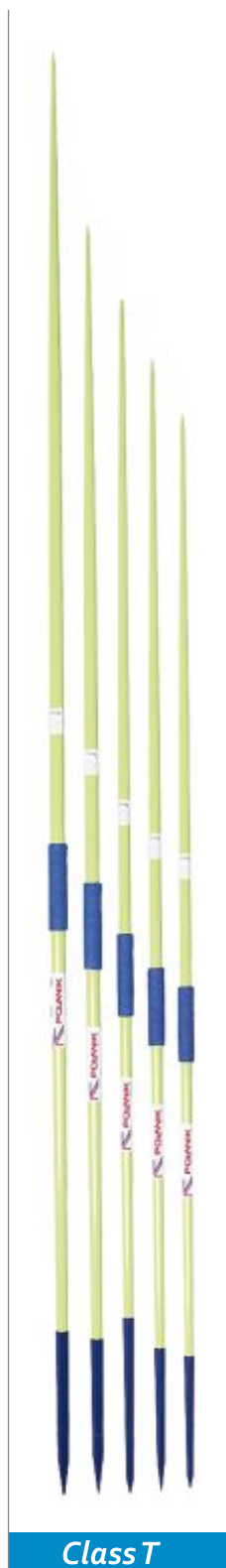
Code	Description	Certificate
SC10-600	Sky Challenger 600 g	IAAF
SC10-700	Sky Challenger 700 g	IAAF
SC10-800	Sky Challenger 800 g	IAAF

AIR FLYER

Base model for beginners. Slightly less rigid shank forgives throwers' mistakes and does not strain the joints. Excellent for mastering the throwing technique. Steel galvanized head, powder painted shank in blue transparent colour



Code	Description	Certificate
AF11-500	Air Flyer 500 g	IAAF
AF10-600	Air Flyer 600 g	IAAF
AF10-700	Air Flyer 700 g	IAAF
AF10-800	Air Flyer 800 g	IAAF

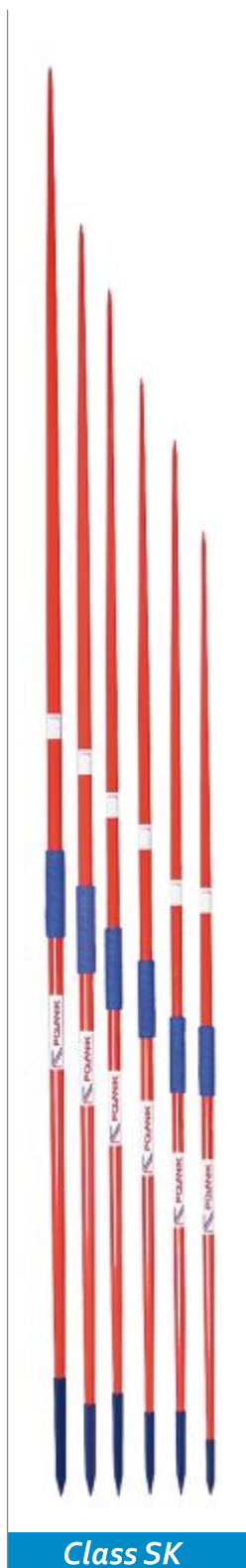


Class T

Training, steel head

Code	Weight [g]
W-4-T	400
W-5-T	500
W-6-T	600
W-6-T/700	700*
W-7-T	700
W-8-T	800
W-9-T	900
W-10-T	1000

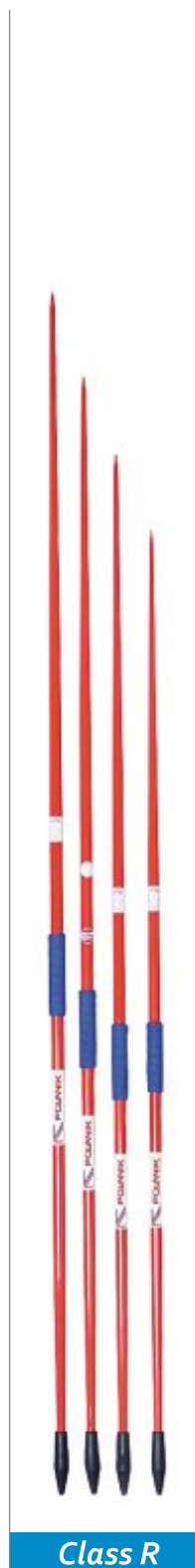
*dimensions of 600 g javelin



Class SK

Designed for school children training, steel head

Code	Weight [g]
W-3-SK	300
W-4-SK	400
W-5-SK	500
W-6-SK	600
W-7-SK	700
W-8-SK	800



Class R

Designed for school children training, rubber head

Code	Weight [g]
W-3-R	300
W-4-R	400
W-5-R	500
W-6-R	600

Javelin rack



Made of steel tubes and profiles coated with powder paints

Code	Description
JR-18	18 javelins, stationary

Javelin rack on wheels



Made of steel tubes and profiles coated with powder paints, easy to manoeuvre

Code	Description
JR-18-W	18 javelins, on wheels

Javelin tubes

Cover made of waterproof synthetic fabric, PVC shell inside, special strengthening of both tube ends prevents piercing, sturdy handles



Code	Capacity
JTU-600	7 javelins 600 g
JTU-700	5 javelins 700 g
JTU-800	5 javelins 800 g

Javelin bags



Made of waterproof synthetic fabric, special strengthening of both bag ends prevents piercing, Velcro® belts located inside secure javelins against movements, sturdy handles

Code	Capacity
JB-400/5	5 javelins 400 g or 300 g
JB-500/5	5 javelins 500 g
JB-600/5	5 javelins 600 g
JB-600/10	10 javelins 600 g
JB-700/5	5 javelins 700 g
JB-700/10	10 javelins 700 g
JB-800/5	5 javelins 800 g
JB-800/10	10 javelins 800 g

Competition carbon discuses



Brass rim, composite sideplates (made from polyester epoxy resins, carbon fibre and fibreglass), each comes with Polanik discus bag, IAAF certificates



Code	Weight [kg]	Certificate
CCD-1	1	IAAF
CCD-1,5	1,5	IAAF
CCD-1,6	1,6	
CCD-1,75	1,75	IAAF
CCD-2	2	IAAF



Competition plastic discuses



Discus rim made of special alloy resistant to corrosion, synthetic sideplates with high fibreglass content, IAAF certificates



Code	Weight [kg]	Certificate
CPD11-0,6	0,6	
CPD11-0,75	0,75	
CPD11-0,8	0,8	
CPD11-1	1	IAAF
CPD11-1,25	1,25	
CPD11-1,5	1,5	IAAF
CPD11-1,6	1,6	
CPD11-1,75	1,75	IAAF
CPD11-2	2	IAAF



Competition plywood discuses



Discus rim made of special alloy resistant to corrosion, hard plywood sideplates (made of special mixture of wood and resin pressed under high pressure), non-standard weights on request even up to 4 kg



Code	Weight [kg]	Certificate
HPD11-1	1	IAAF
HPD11-1,5	1,5	IAAF
HPD11-1,6	1,6	
HPD11-1,75	1,75	IAAF
HPD11-2	2	IAAF



Discus bags



Made of waterproof synthetic fabric, each holds one discus, Velcro® closure, sturdy handle

Code	Capacity
DB-100	for 1 discus up to 1 kg
DB-150	for 1 discus up to 1,5 kg
DB-200	for 1 discus up to 2 kg



Training plastic discuses

EXTRA



Discus rim made of special alloy resistant to corrosion, synthetic sideplates, non-standard weights on request

Code	Weight [kg]	Certificate
TPD11-0,6	0,6	
TPD11-0,75	0,75	
TPD11-0,8	0,8	
TPD11-1	1	PZLA
TPD11-1,25	1,25	
TPD11-1,5	1,5	PZLA
TPD11-1,6	1,6	
TPD11-1,75	1,75	
TPD11-2	2	



Training adjustable discuses

POLANIK BAG



Discus weight adjusted with flat galvanized steel discs (50 g increase), steel galvanized rim, synthetic sideplates, special hex key and carrying bag included

Code	Weight [kg]
DA075-S2840	0,75-1,25
DA100-S2471	1-1,5
DA125-S284	1,25-1,75
DA150-S2481	1,5-2
DA175-S286	1,75-2,25
DA200-S249	2-2,5



Training rubber discuses



Hard black rubber discuses (HRD-series) designed for serial throwing on the field, white rubber discuses (SRD-series) designed for indoor training (made of non-marking rubber)

Code	Weight [kg]	Code	Weight [kg]
HRD-0,35	0,35	HRD-2	2
HRD-0,6	0,6	SRD-0,6	0,6
HRD-0,75	0,75	SRD-0,75	0,75
HRD-0,8	0,8	SRD-1	1
HRD-1	1	SRD-1,5	1,5
HRD-1,25	1,25	SRD-1,6	1,6
HRD-1,5	1,5	SRD-1,75	1,75
HRD-1,6	1,6	SRD-2	2
HRD-1,75	1,75		

TRIAL training discuses

NEW

Super soft rubber, safe in use, ideal for beginners, for indoor and outdoor training, bright visible colours, 300 g and 500 g models float



Code	Weight [kg]	Dia. [mm]
DSK-0,3	0,3	185
DSK-0,5	0,5	185
DSK-0,75	0,75	185
DSK-1	1	185
DSK-1,25	1,25	185
DSK-1,5	1,5	185
DSK-1,5-JB	1,5	220
DSK-1,61	1,61	220
DSK-1,75	1,75	220
DSK-2	2	220
DSK-2,5	2,5	220
DSK-3	3	220

Racks for discuses

Made of steel tubes and profiles coated with powder paints



Code	Description
DR-26	for 26 discuses, stationary
DR-39	for 39 discuses, stationary
DR-26-W	for 26 discuses, on wheels
DR-39-W	for 39 discuses, on wheels

Discus throwing cage



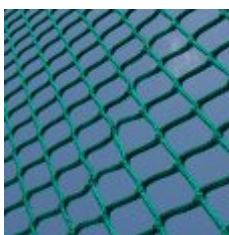
Innovative construction, meets users' requirements: high quality materials and manufacturing, easy to assemble and dismount, simple operation, reliability, complies with the IAAF competition rules



aluminium pillars anodized in silver colour, screwed to special anchors



flat anchors without spaces accumulating water, equipped with hinges for easy and safe cage installation



durable and elastic safety screen made of certified net, proper absorption of impact energy, special tightening system by means of steel wires and hooks



self-locking mechanism of net lifting by means of cranks, high reliability and easy operating, mechanism casing made of galvanized steel with powder paint finish



pillar profiles closed with top caps securing cage construction against water penetration, light aluminium pillars easy to install within 3 hours by 3-4 people without cranes

Code	Description	Certificate
KLD-5-A	aluminium competition cage, height 5 m	IAAF
K1-0237	anchor set for the cage	IAAF

See also the safety cages for discus and hammer throwing on page 15

Discus throwing circle

Four parts (quadrants) made of galvanized steel, IAAF certified



Code	Dia. [m]	Certificate
DC-250	2,5	IAAF



ZIOLKOWSKI HAMMERS PREMIUM LINE

The best competition implements on the market, the result of the close cooperation with outstanding athlete the Olympic Champion Szymon Ziolkowski. Manufactured with high accuracy, perfectly balanced and having optimal dimensions. Mastering all the elements during the whole production process guarantees that our ZIOLKOWSKI HAMMER flies farther than an ordinary hammer using the same throwing technique



Code	Description	Certificate
① ZH-7,26-G	Ziolkowski Hammer GOLD; 7,26 kg brass	IAAF
② ZH-7,26-S	Ziolkowski Hammer SILVER; 7,26 kg stainless steel	IAAF
③ ZH-7,26-B	Ziolkowski Hammer BLACK; 7,26 kg steel	IAAF

PREMIUM LINE HAMMERS



The unique production experience, which we gained while making ZIOLKOWSKI HAMMERS, helped us to create 4 kg hammers of PREMIUM LINE for women

Code	Description	Certificate
④ PH-4-G	Gold Hammer; 4 kg brass	IAAF
⑤ PH-4-S	Silver Hammer; 4 kg stainless steel	IAAF
⑥ PH-4-B	Black Hammer; 4 kg steel	IAAF

all Premium Line hammers come with:



dedicated wire



handle



carrying bag



the hammer elements are individually packed

Competition hammer gloves



Made of genuine leather, special strengthening of palm and fingers, tightening belt with Velcro® closure, for left-handed and right-handed throwers, in 4 sizes, individually packed



Code	Type
CHGR-S	right, size S
CHGR-M	right, size M
CHGR-L	right, size L
CHGR-XL	right, size XL
CHGL-S	left, size S
CHGL-M	left, size M
CHGL-L	left, size L
CHGL-XL	left, size XL

Transport case

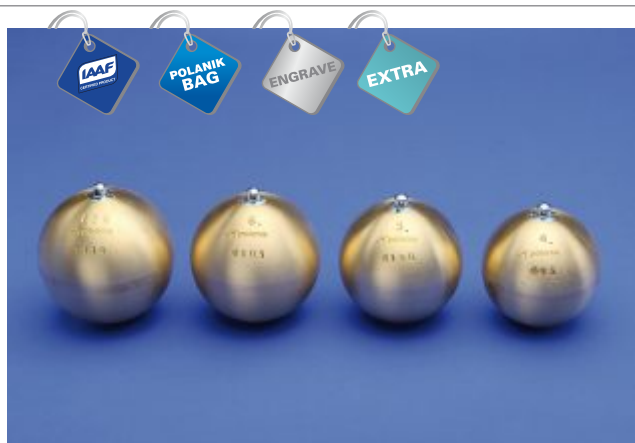
Sturdy aluminium case, strengthen corners, interior upholstered with foam, two compartments for heads of diameter up to 120 mm, one additional compartment for handles and gloves

Code	Capacity
SKM	2 hammers



Hammer throw

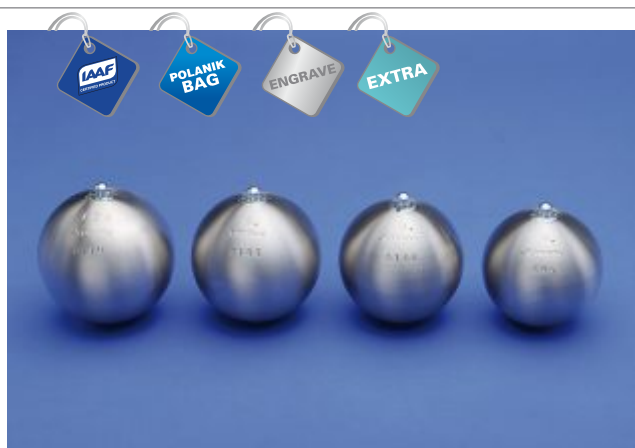
Competition brass hammers



Turned on the whole surface and sanded, galvanized swivel made of high quality hardened steel, wire and certified handle included, each comes with Polanik hammer bag

Code	Weight [kg]	Dia. [mm]	Certificate
PM-3/95-M	3	95	
PM-4/95-M	4	95	IAAF
PM-5/100-M	5	100	IAAF
PM-5,45/110-M	5,45	110	
PM-6/105-M	6	105	IAAF
PM-7,26/110-M	7,26	110	IAAF

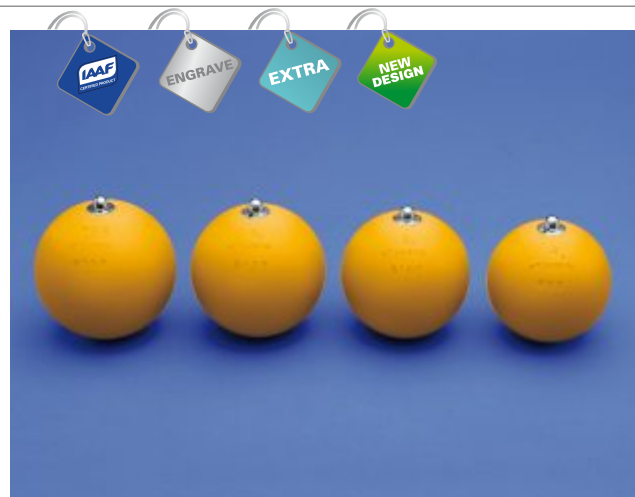
Competition stainless steel hammers



Turned on the whole surface and sanded, galvanized swivel made of high quality hardened steel, wire and certified handle included, each comes with Polanik hammer bag

Code	Weight [kg]	Dia. [mm]	Certificate
PM-3/95-S	3	95	
PM-4/95-S	4	95	IAAF
PM-5/100-S	5	100	IAAF
PM-5,45/105-S	5,45	105	
PM-5,45/110-S	5,45	110	
PM-6/105-S	6	105	IAAF
PM-7,26/110-S	7,26	110	IAAF

Competition steel hammers



Turned on the whole surface and powder painted, galvanized swivel made of high quality hardened steel, wire and certified handle included

Code	Weight [kg]	Dia. [mm]	Certificate
PM-3/85	3	85	IAAF
PM-3/95	3	95	IAAF
PM-4/95	4	95	IAAF
PM-4/100	4	100	
PM-5/100	5	100	IAAF
PM-5/105	5	105	IAAF
PM-5/110	5	110	
PM-6/105	6	105	IAAF
PM-6/110	6	110	
PM-7,26/110	7,26	110	IAAF
PM-7,26/113	7,26	113	
PM-7,26/115	7,26	115	
PM-7,26/127	7,26	127	



Thanks to the modern production technology of the Premium Line hammers a dedication on each of Polanik hammers, throwing weights and shots can be ordered



Training steel hammers



Non-standard weights on request. Complete list of hammers at www.polanik.com



Code	Weight [kg]
PM-1	1
PM-2	2
PM-3	3

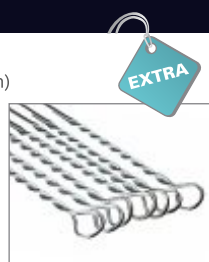
Powder painted, galvanized swivel made of high quality hardened steel, wire and handle included

Code	Weight [kg]
PM-4	4
PM-5	5
PM-6	6
PM-7,26	7,26
PM-8	8
PM-9	9
PM-9,5	9,5
PM-10	10
PM-11,5	11,5
PM-12	12

Hammer wires

Made of steel wire dia. 3 mm, galvanized, length allowance ± 2 mm, lengths from 360 mm to 1000 mm (complete list available at www.polanik.com)

Code	Description
PM-970	for PM-4/100, PM-5/105 and all training hammers
PM-982	for PM-4/95, PM-4/95-S, PM-4/95-M, PM-5/100, PM-5/100-S, PM-5/100-M, PM-7,26/115, PM-7,26/113
PM-987	for PM-6/110, PM-7,26/110, PM-7,26/110-S, PM-7,26/110-M
PM-992	for PM-6/105, PM-6/105-S, PM-6/105-M



Hammer key



Made of hardened steel, designed for replacing hammer swivel in Polanik hammers

Code	Description
HK	hammer swivel key

Hammer handles

Made of duraluminium and steel wire, powder painted, light and very durable construction

Code	Type	Grip	Inside width [mm]	Hammers	Certificate
UW-110	competition	curved	110	up to 4 kg inclusive	IAAF
UP-110	competition	straight	110	up to 4 kg inclusive	IAAF
UW-115	competition	curved	115	over 4 kg to 7,26 kg inclusive	IAAF
UP-115	competition	straight	115	over 4 kg to 7,26 kg inclusive	IAAF
UW-120	training	curved	120	over 7,26 kg	
UP-120	training	straight	120	over 7,26 kg	
UW-130	training	curved	130	over 7,26 kg	
UP-130	training	straight	130	over 7,26 kg	



Heavy hammer handle

Made of flat steel wire and special alloy, comfortable grip, powder painted, very strong construction, possible connection to Polanik throwing weight with quick link connector



Code	Description
① S-145	heavy hammer handle
② S-333	quick link connector

Hammer gloves

Made of genuine leather, for left-handed and right-handed throwers, in 4 sizes



Code	Hand	Size
HGL-S	left	S
HGL-M	left	M
HGL-L	left	L
HGL-XL	left	XL
HGR-S	right	S
HGR-M	right	M
HGR-L	right	L
HGR-XL	right	XL

Hammer racks

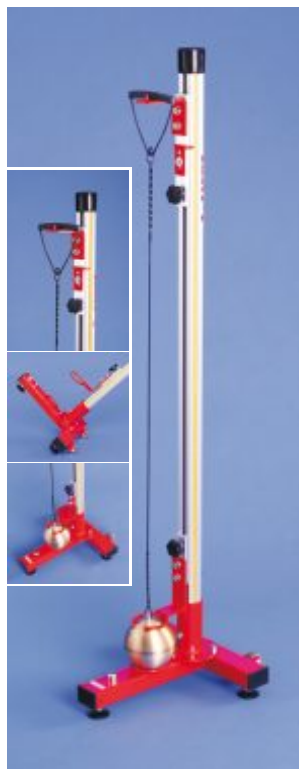
Powder painted steel tubes and profiles

Code	Type	Capacity
① HR-12	stationary	12 hammers
② HR-12-W	on wheels	12 hammers



Measuring device for hammers

Made of aluminium and steel profiles, lets you test hammer length and location of gravity centre



Code	Description
MDH-120	measuring device for hammers

Throwing weights



Comply with EVAA (European Veterans Athletic Association), WMA (World Masters Athletics) and USA Track & Field rules, swivel made of high quality hardened galvanized steel, powder painted head, steel galvanized handle and chain, non-standard weights and diameters on request, each comes with Polanik weight bag

Code	Weight [kg]
TW-5	5
TW-5,45	5,45
TW-7,26	7,26
TW-9,08	9,08
TW-10	10

Code	Weight [kg]
TW-10,89	10,89
TW-11,34	11,34
TW-12	12
TW-12,5	12,5
TW-12,73	12,73

Code	Weight [kg]
TW-15	15
TW-15,88	15,88
TW-20	20
TW-25,4	25,4

Training weights



Turned steel head powder coated, steel galvanized swivel, galvanized chain with hammer handle UW-110, length 300 mm with reduction to 230 mm

Code	Weight [kg]
TW-1,5	1,5
TW-1,75	1,75
TW-2	2

Hammer bag

Made of waterproof synthetic fabric, each holds one hammer, Velcro® closure, sturdy handle, hooks for clipping the hammer wire in the set



Code	Description
HB	hammer bag

Highland games throwing weights

Designed for weight throw and toss over crossbar, powder painted head, galvanized ring handle and chain, each comes with Polanik weight bag

Code	Weight [kg]	Length [mm]
TWR-12,7/454	12,7	454
TWR-25,4/365	25,4	365
TWR-25,4/455	25,4	455



Bag for hammer/weight/shot put



Made of waterproof synthetic fabric, each holds one implement Velcro® closure, sturdy handle

Code	Description
SB-110	dia. up to 110 mm
SB-135	dia. up to 135 mm
SB-165	dia. up to 165 mm

Weight handle with chain

Handle with chain and shackle, steel galvanized, (please include throwing weight code when ordering)



Code	Description
TWH	handle with chain

Throwing weight key

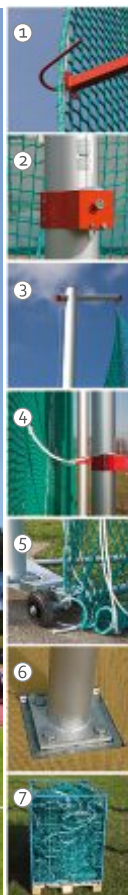
Made of hardened steel, designed for replacing throwing weight swivel in Polanik weight



Code	Description
TWK	weight swivel key

Safety cages for discus and hammer throwing

Independent pillars installed on embedded ground anchors, certified net, easy assembly and disassembly, simple operation and high reliability



1. tightening system (based on: special side arms, steel wires and hooks) guarantees durable and elastic net screen with proper absorption of impact energy of discus and hammer
2. self-locking mechanism of net lifting by means of cranks, high reliability and easy operating, mechanism casing made of galvanized steel with powder paint finish
3. light aluminium construction easy to install without cranes, pillar profiles closed with top caps securing cage construction against water penetration
4. horizontal stay ropes maintain the proper position of the net during side winds
5. two movable panels equipped with double brakes and blocking pins
6. anchors without spaces accumulating water, equipped with hinges for connecting pillars, fast and safe cage installation
7. net is delivered in steel container, ideal for transport and storing

Code	Description	Cert.
KLM-7/10-A	competition aluminium, cage height 7 m, gate height 10 m, without anchors	IAAF
K1-0026	ground anchors set for KLM-7/10-A	IAAF
KLM-7/9-A	training aluminium, cage height 7 m, gate height 9 m, without anchors	
KLM-5/7-A	training aluminium, cage height 5 m, gate height 7 m, without anchors	
K1-0027	ground anchors set for KLM-7/9-A and KLM-5/7-A	

Cage pillar shields

Effective protection of the cage elements particularly exposed to damages caused by discus and hammer impacts, steel shields made of high quality steel with double protection against corrosion, soft pads with high quality PUR foam mounted on the steel shields protect the cage net against cutting



	Code	Description
①	OS290	steel shield of pillar dia. 120 mm, length 1 m
	OS296	steel shield of pillar dia. 150 mm, length 1 m
②	OM-1	soft pad for steel shield 1 m
③	ZO-1	complete set of 16 steel shields and 16 soft pads for KLM-7/10-A or KLM-7/9-A

Cage gate lift

Offers comfortable assembly and disassembly of cage gate, reliable and safe winch with automatic load brake, designed for KLM-7/10-A and KLM-7/9 -A

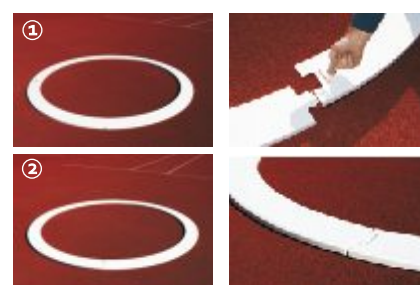


Code	Description
CGL-3	cage gate lift



Hammer conversion circles

Reduce discus circle diameter to 2135 mm, 4 elements assembled together by means of single-head feather key



	Code	Material	Dia. [mm]	Certificate
①	HCC-2135	steel galvanized and powder painted	2500-2135	IAAF
②	HCC-2135-T	fibreglass	2500-2135	

Competition brass shot puts

Turned on the whole surface and sanded, each comes with Polanik shot put bag

Code	Weight [kg]	Dia. [mm]	Certificate
PK-4/100-M	4	100	IAAF
PK-5/100-M	5	100	
PK-5/110-M	5	110	IAAF
PK-5,45/110-M	5,45	110	
PK-6/110-M	6	110	IAAF
PK-7,26/115-M	7,26	115	IAAF

Competition stainless steel shot puts

Turned on the whole surface and sanded, each comes with Polanik shot put bag

Code	Weight [kg]	Dia. [mm]	Certificate
PK-3/105-S	3	105	
PK-3/110-S	3	110	
PK-4/95-S	4	95	IAAF
PK-4/100-S	4	100	IAAF
PK-4/105-S	4	105	IAAF
PK-5/105-S	5	105	IAAF
PK-5/110-S	5	110	IAAF
PK-5/115-S	5	115	IAAF
PK-5,45/110-S	5,45	110	
PK-6/105-S	6	105	
PK-6/110-S	6	110	IAAF
PK-7,26/115-S	7,26	115	IAAF

Competition steel shot puts

Turned on the whole surface and powder painted

Code	Weight [kg]	Dia. [mm]	Certificate
PK-3/85	3	85	IAAF
PK-3/95	3	95	
PK-3/100	3	100	IAAF
PK-3/105	3	105	
PK-3/108	3	108	IAAF
PK-4/95	4	95	
PK-4/100	4	100	IAAF
PK-4/105	4	105	
PK-4/108	4	108	
PK-4/110	4	110	
PK-5/100	5	100	
PK-5/105	5	105	
PK-5/108	5	108	
PK-5/110	5	110	IAAF
PK-5/115	5	115	
PK-5/120	5	120	
PK-6/105	6	105	
PK-6/110	6	110	
PK-6/115	6	115	IAAF
PK-6/120	6	120	
PK-6/125	6	125	
PK-7,26/113	7,26	113	IAAF
PK-7,26/115	7,26	115	
PK-7,26/120	7,26	120	IAAF
PK-7,26/125	7,26	125	
PK-7,26/128	7,26	128	IAAF

Training steel shot puts

Turned and powder painted

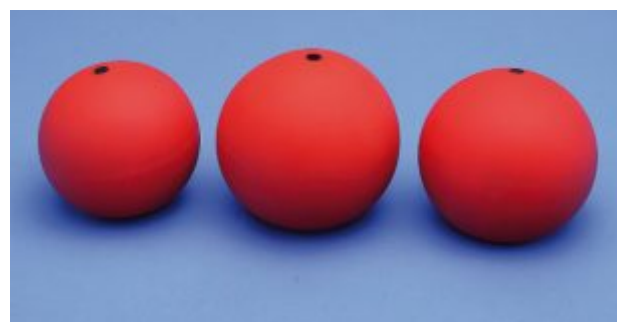


Code	Weight [kg]	Certificate	Code	Weight [kg]
PK-1	1		PK-7,26	7,26
PK-2	2		PK-8	8
PK-3	3	PZLA	PK-9	9
PK-4	4	PZLA	PK-10	10
PK-5	5	PZLA	PK-11	11
PK-6	6		PK-12	12

Complete list of shot puts at www.polanik.com
Non-standard weights on request

PVC training shot puts

Designed for indoor training, durable elastic PVC shell, filled with shot



Code	Weight [kg]	Code	Weight [kg]
PKG-1	1	PKG-4	4
PKG-1,5	1,5	PKG-4,5	4,5
PKG-2	2	PKG-5	5
PKG-2,5	2,5	PKG-6	6
PKG-3	3	PKG-7,26	7,26
PKG-3,5	3,5		

TRIAL training shot

Super soft rubber, safe in use, ideal for beginners, for indoor and outdoor training, bright visible colours



Code	Weight [kg]	Dia. [mm]	Code	Weight [kg]	Dia. [mm]
VDL1,5	0,15	65	VDL25	2,5	100
VDL2	0,2	65	VDL27	2,72	115
VDL3	0,3	65	VDL30	3	115
VDL4	0,4	65	VDL32	3,25	115
VDL5	0,5	65	VDL40	4	115
VDL6	0,6	65	VDL50	5	130
VDL8	0,8	100	VDL55	5,5	130
VDL10	1	100	VDL60	6	130
VDL15	1,5	100	VDL62	6,25	130
VDL20	2	100	VDL72	7,265	135

Bag for hammer/weight/shot put



Made of waterproof synthetic fabric, each holds one implement, Velcro® closure, sturdy handle

Code	Description
SB-110	dia. up to 110 mm
SB-135	dia. up to 135 mm
SB-165	dia. up to 165 mm

Shot put racks

Special shelves hold complete sets of competition and training shots powder painted steel tubes and profiles

	Code	Type	Capacity
①	SR-18	stationary	18 shots
②	SR-24	stationary	24 shots
③	SR-24-W	on wheels	24 shots



Competition shot put toe board

Steel galvanized and powder painted frame, top element made of waterproof plywood 20 mm thick coated with ecological paint can be easily replaced, endures 8 kg shot put impact dropped from 1,8 m



Code	Description	Certificate
S-269	competition toe board, fastening bolts included	IAAF
S-269-00-01	top element 20 mm thick	

Training shot put toe board

Made of fibreglass, in white colour



Code	Description
S-257-T	training toe board, fastening bolts included

Shot put circle

Set contains four parts (quadrants), made of galvanized steel, screwed with 8 bolts, inside coated with white paint



Code	Dia. [mm]	Certificate
S-243	2135	IAAF

Shot put return channel



Designed to easily and quickly retrieve shot puts from a landing sector, 8 steel segments galvanized and powder painted, the whole construction screwed together with one hex key, equipped with shot catcher, length 20 m

Code	Description
SRC-S0327	shot put return channel, modular



Indoor shot put safety barriers

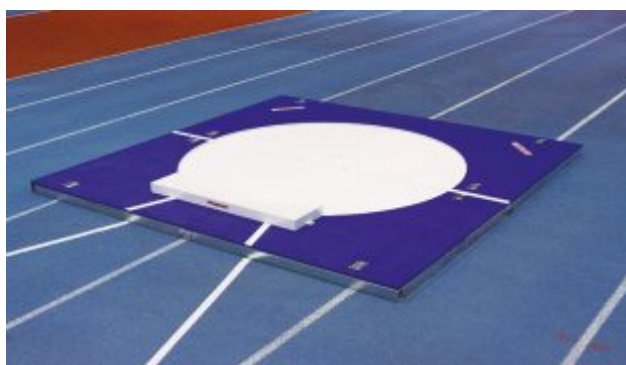


Modular construction made of steel galvanized and plywood, assembly without tools, foam pads installed by means of Velcro® belts, certified net, special distance markers, landing sector self adhesive tape included, standard sets easily extended with additional panels, designed to be used with shot put indoor mat MPK-2110

Code	Length [m]	Width [m]	Height [m]
BO-308/2	12,5	10	2
BO-308/3	12,5	10	3



Indoor throwing circle with competition toe board



Code	Description
SP0319	dia. 2135 mm with toe board S-269



Supporting structure made of steel profiles and sections galvanized, top elements made of plywood 20 mm thick, 4 quadrants screwed together, handles for carrying, competition toe board S-269 with IAAF certificate included in the set

Shot put indoor mat



Special „sandwich” construction minimize shot rebound, visible impact mark easy to be recorded

Code	Length [m]	Width [m]	Height [m]
MPK-2110	2	1	0,1

Self adhesive tape



Designed to mark landing sector on shot put indoor mats, made of PCV, white, 50 mm wide

Code	Length [m]
TSR-25	25

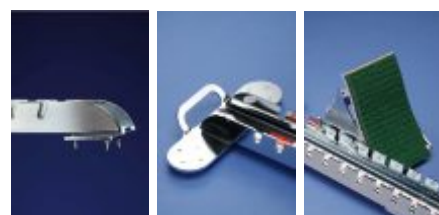
Competition aluminium starting block



Designed for synthetic track, special aluminium profiles, ergonomic supports (5 inclinations and 15 positions on the rail), inclined block spikes at special angle

Code	Type	Certificate
PBS-02	competition aluminium	IAAF

Competition steel-aluminium starting block



Designed for synthetic track, steel rail and support casing, aluminium support and adjusting lever, ergonomic supports (5 inclinations and 15 positions on the rail)

Code	Type	Certificate
PBS-03	competition steel-aluminium	IAAF

Competition steel starting block

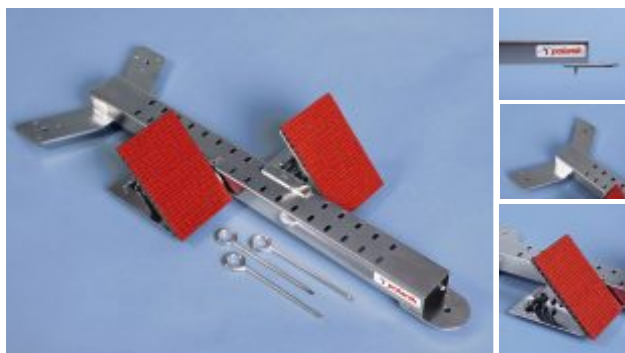


Strong steel galvanized construction, wide range of adjustments (5 inclinations and 15 positions on the rail), designed for synthetic track

Code	Type	Certificate
PBS-01	Competition steel	IAAF

School-training starting block

Steel galvanized construction, 4 positions of support inclination, 14 support positions on the rail, designed for synthetic and cinder tracks, pins included, ideal for schools



Code	Type	Certificate
PBS-T	school-training steel	PZLA

Starting block rack

Powder painted steel tubes and profiles, holds 8 starting blocks

Code
BR-8-W
Description
on wheels, 8 blocks PBS-01/PBS-02/PBS-03



Competition hurdles - one-piece aluminium



Hurdle frame and feet constitute one very durable element, made of aluminium tubes and profiles, easy to stack up because of special square feet, spring-loaded button system of hurdle toppling force – steel counterweights installed on bearing balls, anodized and dyed blue aluminium telescope tubes with spring-loaded button system of height adjustment

Code	Heights [mm]	Certificate
PP-170	762, 838, 914, 991, 1067	IAAF
S-018	686, 762, 838, 914, 991, 1067	

Competition hurdles - collapsible aluminium



Hurdle frame made of anodized aluminium tubes and profiles, resistant to weather conditions, anodized and dyed blue aluminium telescope tubes and feet, spring-loaded button system of height adjustment and hurdle toppling force, steel counterweights installed on bearing balls, economical in transport collapsible construction

Code	Heights [mm]	Certificate
PP-173	762, 838, 914, 991, 1067	IAAF
PP-173/6a	686, 762, 838, 914, 991, 1067	IAAF

Competition hurdles - collapsible steel-aluminium



Hurdle frame made of galvanized steel tubes and profiles, anodized and dyed red aluminium telescope tubes and hurdle feet, spring-loaded button systems of hurdle toppling force and height adjustment, steel counterweights installed on bearing balls, economical in transport collapsible construction

Code	Heights [mm]	Certificate
PP-171	762, 838, 914, 991, 1067	IAAF
PP-171/6a	686, 762, 838, 914, 991, 1067	IAAF
PP-171/6b	680, 762, 838, 914, 1000, 1067	
PP-171/6c	680, 762, 838, 891, 1000, 1067	
PP-171/6d	650, 762, 838, 914, 991, 1067	IAAF

Training hurdles - one-piece steel-aluminium



Designed for schools, simple and light steel frame made of tubes bent at 90 degrees, powder painted, permanent counterweights, aluminium telescope tubes with spring-loaded button system of height adjustment

Code	Heights [mm]	Certificate
PP-178	686, 762, 838, 914, 991, 1067	
PP-178/7	650, 686, 762, 838, 914, 991, 1067	
PP-179	600, 686, 762, 838, 914	PZLA

Training hurdles - collapsible aluminium and steel-aluminium



Designed for training juniors and seniors in sports schools and clubs, aluminium or steel feet with permanent counterweights, economical in transport collapsible construction, hurdle frame made of aluminium or steel tubes and profiles, aluminium telescope tubes with spring-loaded button system of height adjustment

Code	Heights [mm]	Description
PP-174	686, 762, 838, 914, 991, 1067	steel-aluminium
PP-174/7	650, 686, 762, 838, 914, 991, 1067	steel-aluminium
PP-175	600, 686, 762, 838, 914	steel-aluminium
PP-176	686, 762, 838, 914, 991, 1067	aluminium
PP-177	600, 686, 762, 838, 914	aluminium
PP-185	500, 600, 762	steel-aluminium

Training hurdles - spring back



Designed for training children and pupils in schools, aluminium telescope tubes welded to special crossbar protected with soft lining instead of traditional top board, spring mechanism responsible for returning hurdle crossbar to its original position, stable hurdle feet with rubber pads, frame made of galvanized steel tubes and profiles

Code	Heights [mm]
PP-180	686, 762, 838, 914, 991, 1067
PP-180/7	650, 686, 762, 838, 914, 991, 1067
PP-181	600, 686, 762, 838, 914
PP-182	500, 600, 762

Training step hurdles

Designed for running drills, agility training and plyometric drills



Code	Unit	Heights [mm]
S-318	1 piece	150
S-318x10	10 pieces	150

Training hurdles with padded top bar



Soft lining of top bar provides safe training, reliable spring-loaded button systems of height adjustment and folding

Code	Unit	Heights [mm]
S-0306	1 piece	300, 400
S-0306x5	5 pieces	300, 400
S-0306x10	10 pieces	300, 400
S-0307	1 piece	400, 500, 600
S-0307x5	5 pieces	400, 500, 600
S-0307x10	10 pieces	400, 500, 600

Lap counter with bell

Clear arrangement of digital plastic units, loud brass bell, foamed PVC board screwed to steel frame, two-segment post with synthetic connector, rotation 360°, blocked in desired position with adjusting screw, new flat base inexpensive in transport



Code	Description
T2-S246	lap counter with bell

Hurdle top boards



Made of highly resistant plastic profile, ribbed inside

Code	Type	Thickness [mm]
TB-014	training	14
TB-018	competition	18

Custom top boards



Place your logo, club name or event title on top boards, order minimum 50 hurdles and we shall custom the top boards FREE of CHARGE

Code	Description
CTB	customizing hurdle top board

Hurdle cart for competition hurdles



Durable and light aluminium construction anodized in silver colour, wide handle and catch for electric truck shaft

Code	Capacity
HC-23	20 hurdles PP-170 or 28 hurdles PP-171/PP-173
HC-34	30 hurdles PP-170 or 40 hurdles PP-171/PP-173

Hurdle cart for training hurdles



Steel galvanized construction, wide handle

Code	Capacity
S-259	30 hurdles PP-178/PP-174/PP-176

Starter's stand

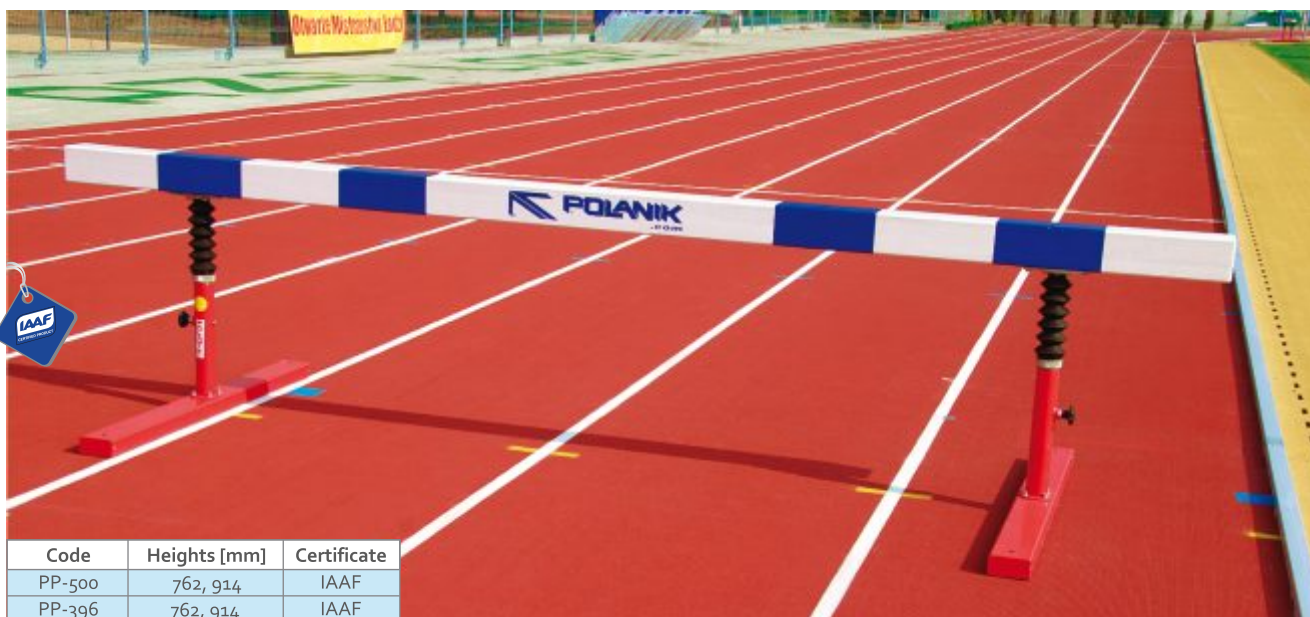


Optimal height to view all lanes in track events, heavy duty thick-walled base made of fibreglass, powder painted steel pole equipped with a special shelf for starting revolver and cartridges



Code	Description
PS11-338	starter's stand, height 40 cm

Steeplechase barriers



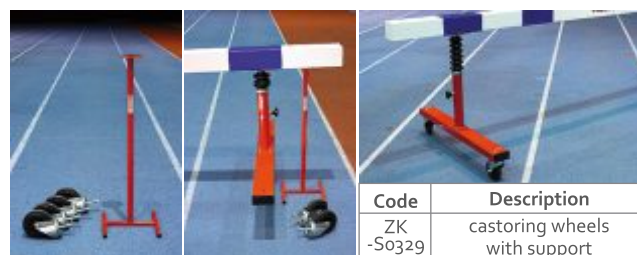
Code	Heights [mm]	Certificate
PP-500	762, 914	IAAF
PP-396	762, 914	IAAF

Multilayer wooden beam installed on telescopic base legs with height adjustment system, telescopes equipped with protective rubber aprons against moisture, no ground sockets needed



Code	Heights [mm]	Certificate
PP-366	762, 914	IAAF

Mobility set for steeplechase barrier



Code	Description
ZK-S0329	castoring wheels with support

Relay batons



Made of thin wall aluminium tube, coated with durable powder paints

Code	Type	Dia. [mm]	Certificate
PPA-32/4	school, set 4 pcs	32	
PPA-32/6	school, set 6 pcs	32	
PPA-32/8	school, set 8 pcs	32	
PPA-38/4	competition, set 4 pcs	40	IAAF
PPA-38/6	competition, set 6 pcs	40	IAAF
PPA-38/8	competition, set 8 pcs	40	IAAF

Lane markers



Code	Description
LM-45	reinforced profile, square section, height 45 cm, when ordering please specify the lane number
LM-45/4	set of 4 lane markers LM-45
LM-45/6	set of 6 lane markers LM-45
LM-45/8	set of 8 lane markers LM-45
LM-45/10	set of 10 lane markers LM-45



Made of white fibreglass, equipped with two false start indicators, special cut-out handle, big digits, provide quick identification of competitor's lane, easy to store, available individually and in ready sets

Code	Description
LM-60	triangular section, height 61 cm, when ordering please specify the lane number
LM-60/4	set of 4 lane markers LM-60
LM-60/6	set of 6 lane markers LM-60
LM-60/8	set of 8 lane markers LM-60
LM-60/10	set of 10 lane markers LM-60

Competition take-off board

Complete set for installing in the track, the IAAF certificate and the Polish Olympic Committee Award



Code	Description	Certificate
S-250	set with competition take-off board for installing in the track	IAAF

Training take-off board

Complete set for installing in the track



Code	Description
S-0294	set with training take-off board for installing in the track

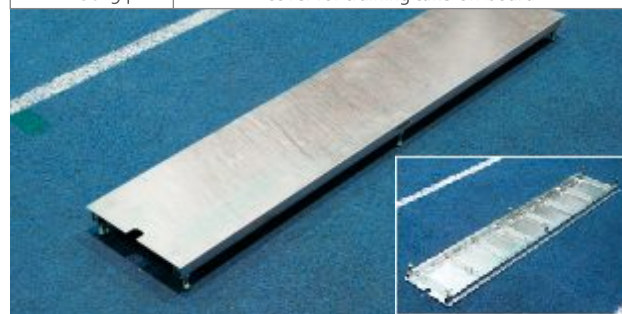
Blanking covers

Smooth surface and adjustable feet for installing synthetic track, strong ribbed construction, made of galvanized steel

Code	Description
S-250-05	cover for competition take-off board

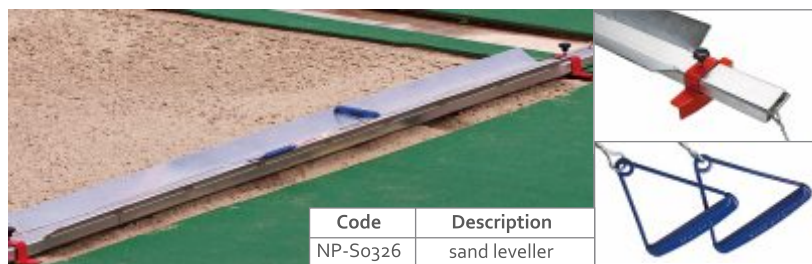


Code	Description
PB-S0294	cover for training take-off board



Sand leveller

Lets you prepare the landing area considerably faster than it is done in a common way, durable steel construction equipped with gathering blades, strong and comfortable handles with specially shaped grips ensure easy operation, special guides give precise adjustment to the landing area width



Code	Description
NP-S0326	sand leveller

Plasticine straps

Set of red plasticine straps, specially shaped, ready to be put into the indicator board recess, designed for S-250 competition take-off board



Code	Description
P8x31	8 straps, each 31 cm long

Pit cover

Made of PVC mesh, steel galvanized chain installed in the edges for anchoring, available in two colours



Code	Description
MP-001	red cover 1 m ²
MP-007	white cover 1 m ²

Distance indicators

Light durable aluminium construction, two segments screwed together, big clear digits, other scales available on request

Code	Description	Scale
LD-S283	for long jump	4,5 m-8,5 m
LT-S283	for triple jump	13,5 m- 17,5 m
LU-S283	universal	one side with 4,5 m- 8,5 m and the other side with 13,5 m-17,5 m



Take-off markers

Made of aluminium sheet, powder painted, contrasting colours

Code	Description
TOM-2	set of 2 pcs



Aluminium rake

With levelling blade, wide head installed on long handle



Code	Description
GA-S0325	aluminium rake

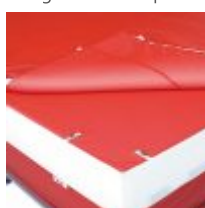
Competition landing area

Available in three colours ● red 001 ● blue 002 ● green 005

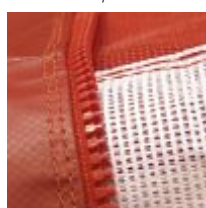


Code	Size [m]	Certificate
W-647	6 x 4 x 0,7	IAAF

Designed for competitions of all levels, the certificate of the International Association of Athletics Federations (IAAF)



unique construction of top pad - double-sided element (spike resistant mesh fabric on both sides) prolongs radically the landing area life



outer covering - PVC fabric made of polyester with two vinyl layers - very high tensile strength and resistance to water



advanced 3-layer internal construction, made of high quality PUR foam - very high protection and comfort



stainless steel hooks and D-rings fasten the top pad to the landing area



segments are fastened to each other with jacquard webbing belts equipped with metal self-locking buckles, strong envelope stitching



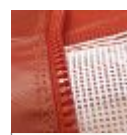
handles made of very strong jacquard webbing

Club multicube landing areas

Designed especially for sports clubs, constituted by several segments, spike resistant mesh fabric covers the upper surface of the top pad



Code	Size [m]
W-536	5 x 3 x 0,6
W-636	6 x 3 x 0,6



PVC covering made of polyester with two vinyl layers



3-layer high quality PUR foam internal construction



stainless steel hooks and D-rings for fastening the top pad



jacquard webbing belts with metal self-locking buckles



sturdy handles made of jacquard webbing, durable envelope stitching

Available in three colours

● red 001
● blue 002
● green 005

Club monocube landing areas

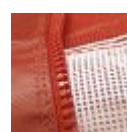
The unique construction has let us reduce costs and maintain the same high level of safety and quality, set of PUR foam constructions which are put into one PVC master covering with spike resistant mesh fabric



Code	Size [m]
W-536-B	5 x 3 x 0,6
W-636-B	6 x 3 x 0,6



3-layer high quality PUR foam internal construction



PVC covering made of polyester with two vinyl layers, resistance to water



foam constructions transported individually, packed in bags with Velcro® closure



linking system prevents the foam elements from moving aside

Available in three colours ● red 001 ● blue 002 ● green 005

School landing areas

Designed for training the youngest competitors



PVC covering made of polyester with two vinyl layers



jacquard webbing belts with metal self-locking buckles



3-layer high quality PUR foam internal construction



sturdy handles made of jacquard webbing, durable envelope stitching



stainless steel hooks and D-rings for fastening the top pad

Code	Size [m]
① W-4255	4 x 2,5 x 0,5
② W-435	4 x 3 x 0,5

Available in three colours

● red 001 ● blue 002 ● green 005

School landing areas made of mats

PVC cover with spike resistant mesh fabric on one side for jumping in spikes, and plain smooth surface on the other side for jumping in trainers



safety mattresses equipped with carrying handles, linking jacquard webbing belts and anti-slip bottoms



Code	Size [m]
① W-4355-S	4 x 3 x 0,55
② W-536-S	5 x 3 x 0,6

Waterproof covers for competition / club multicube / school landing areas

Strong vinyl, welded joints make it very hermetic

Code	Description
P-4255	for W-4255
P-435	for W-435
P-536	for W-536
P-636	for W-636
P-647	for W-647



special metal hooks for fastening to landing area

Available in three colours

● red 001 ● blue 002 ● green 005

Waterproof covers for monocube landing areas

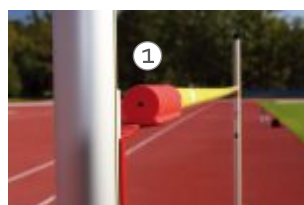
Made of synthetic material, equipped with Velcro® belts for fastening to landing area

Code	Description
P-536-B	for W-536-B
P-636-B	for W-636-B



Crossbars

1. Competition crossbars made of fibreglass, plastic ends
2. Training crossbars made of fibreglass, rubber ends



Code	Length [m]
② PT-035	3,6
② PT-040	4



Code	Length [m]	Certificate
① PW-400	4	IAAF

Modular grid platforms

Special modular construction, made of galvanized steel
economic in transport, small and light elements, easy to store and assemble,
correct isolation from the ground (approx. 10 cm high)



Code	Description
SW-4x2,5	for W-4255
SW-4x3	for W-435
SW-5x3	for W-536, W-536-B
SW-6x3	for W-636, W-636-B
SW-6x4	for W-647*

*one cart WSZG-30 in the set

Self-assembly garages for landing areas

High class shelter against unfavourable weather conditions and damages, made of galvanized steel, roof made of aluminized and galvanized steel sheet, segments linked with padlock clamps, castoring wheels for easy moving, special soft PVC flaps protect inside against animals



Available on request

Code	Description
GW	garage for high jump landing area 1 m ²



Measuring device

Telescopic, 6 segments, made of aluminium profiles, equipped with level, max. height 3 m



Code
MDHJ-3

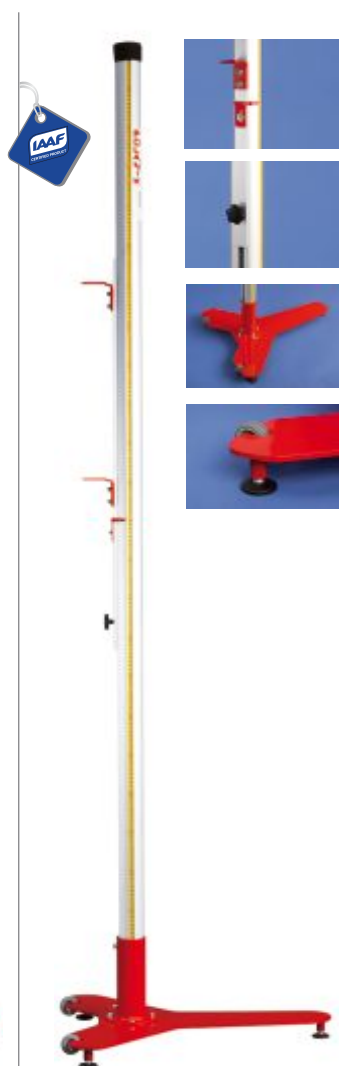


Competition HJ stand

Designed for competitions of all levels

- telescopic construction
- self-blocking mechanism of height adjustment
- new flat base with wheels, economical in transport

Code	Range [cm]	Certificate
STW-02	115-265	IAAF



Competition HJ stand

For training and competitions

- measuring tape installed in special C-shaped groove in aluminium profile
- mechanism of height adjustment by means of handwheel
- new flat base with wheels, economical in transport

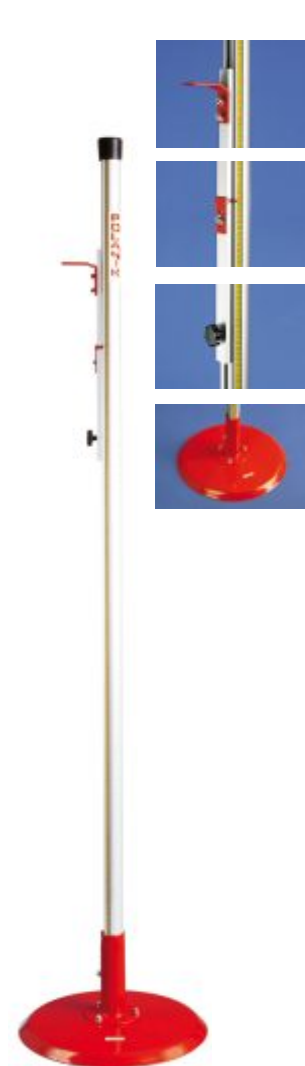
Code	Range [cm]	Certificate
STW-01	75-250	IAAF



School HJ stands

- stable steel base: round or T-shaped
- measuring tape installed in special C-shaped groove in aluminium
- new flat bases, economical in transport

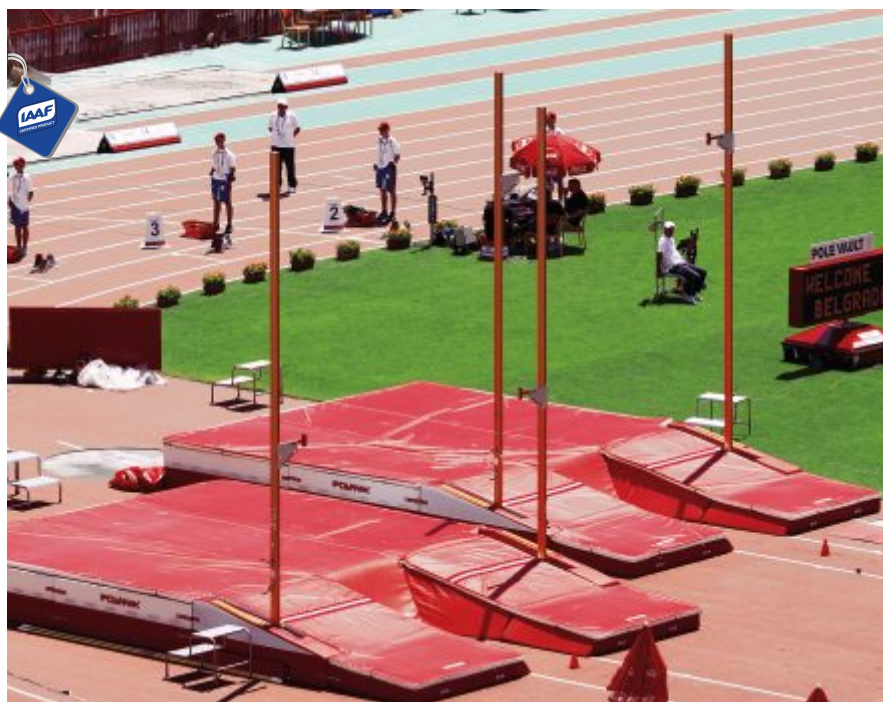
Code	Range [cm]
STW-03/T	75-230



Code	Range [cm]
STW-03	70-200

Competition landing areas

Designed for competitions of all levels, the certificate of the International Association of Athletics Federations (IAAF)



Available
in three colours

- red 001
- blue 002
- green 005



special system of pads surrounding the box gives maximum protection for the pole vaulter



spike resistant mesh fabric on both sides



special PVC fabric - very high tensile strength and resistance to water



high quality PUR foam internal construction

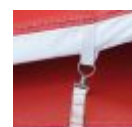
Code	Size [m]	Certificate
T-8568	8,5 x 6 x 0,8	IAAF
T-978	9 x 7 x 0,8	IAAF



handles made of very strong jacquard webbing



jacquard webbing belts equipped with metal self-locking buckles



stainless steel hooks and D-rings

Multicube landing areas

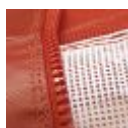
Constituted by several segments, spike resistant mesh fabric covers the upper surface of the top pad



Available
in three colours

- red 001
- blue 002
- green 005

Code	Size [m]	Type
T-547	5 x 4 x 0,7	school
T-657	6 x 5 x 0,7	school
T-758	7 x 5 x 0,8	club



special PVC fabric - very high tensile strength and resistance to water



high quality PUR foam internal construction



jacquard webbing belts equipped with metal self-locking buckles



handles made of very strong jacquard webbing



stainless steel hooks and D-rings

Monocube landing area

The unique construction has let us reduce costs and maintain the same high level of safety and quality, set of PUR foam constructions which are put into one PVC master covering with spike resistant mesh fabric



Available in three colours:

- red 001
- blue 002
- green 005



special PVC fabric - very high tensile strength and resistance to water



foam construction transported in plastic bags with Velcro® closure



original linking system prevents the foam elements from moving aside, so there are no dangerous empty spaces

Code	Size [m]	Type
T-758-B	7 x 5 x 0,8	club

PV boxes



Prepared for installing in track surface

Code	Description	Certificate
PVBOX-S	stainless steel	IAAF
PVBOX-P	steel galvanized and powder painted	

Code	Description
PVCOVER-S	stainless steel
PVCOVER-P	steel galvanized and powder painted

Blanking covers for PV boxes



Waterproof cover for monocube landing area

Made of synthetic material, equipped with Velcro® belts for fastening to landing area



Code	Description
P-758-B	for T-758-B

Modular grid platforms

Special modular construction, made of galvanized steel, economic in transport, small and light elements, easy to store and assemble, correct isolation from the ground (approx. 10 cm high)



* two carts WSZG-3 in the set

Code	Description
ST-5x4	for T-547
ST-6x5	for T-657
ST-7x5	for T-758, T-758-B
ST-8,5x6	for T-8568*
ST-9x7	for T-978*

Waterproof covers for competition and multicube landing areas

Strong vinyl, welded joints make it very hermetic



Available in three colours

- red 001
- blue 002
- green 005

Code	Description
P-547	for T-547
P-657	for T-657
P-758	for T-758
P-8568	for T-8568
P-978	for T-978

Self-assembly garages for landing areas



High class shelter against unfavourable weather conditions and damages, made of galvanized steel, roof made of aluminized and galvanized steel sheet, segments linked with padlock clamps, castoring wheels for easy moving, special soft PVC flaps protect inside against animals

Available on request

Code	Description
GT	garage for pole vault landing area 1 m ²

Electronically driven competition stand POLANIK PREMIUM



We are presenting you a new version of PV stand for high level athletics events

- Accurate - step motors driven by microprocessor console, accuracy control system of crossbar vertical and horizontal positions
- Fast - one push of a button lowers supports for replacing a knocked off crossbar and raises them again to the most recently used height, one person only can replace a crossbar
- Handy and easy to operate - intuitive and clear key arrangement as well as information presented on display in operator's console that is light and small



POLANIK PREMIUM PV stands were successfully used during:

2011-02-20 Polish Indoor Championships
Spala Poland

2011-05-31 Golden Spike Ostrava Czech Republic

2011-06-25 Janusz Kusociński Memorial
Szczecin Poland

2011-07-14 European Athletics U23 Championships
Ostrava Czech Republic

weatherproof anodized aluminium profile, aluminium crossbar support with horizontal adjustment range 0-15 cm, support runner based on eight ball bearings



accurate crossbar positioning mechanism equipped with step motor, tight casing with hermetic socket, motor casing with special soft cover made of PVC and PUR foam



solid steel base fitted with wheels for moving the stand, post shift mechanism with step motor and silent-running toothed gear



light and handy, operator's microprocessor console (dimensions 320 x 210 x 70 [mm]) with cable 15 m long, easy to be placed on the official's table, clear key arrangement ensures simple and fast operation, big digital display providing all necessary information for proper stand control and conducting the event, after knock off use one key to lower supports and position them again at last height, accuracy control system



central driving unit, (dimensions 435 x 300 x 215 [mm]) processing signals from operator's console and driving step motors, steel casing with own cooling system, waterproof cover

Code	Range [cm]	Certificate
STT11-65E	210-628	IAAF

Competition stand POLANIK PROFESSIONAL



weatherproof anodized aluminium profile, aluminium crossbar support with horizontal adjustment range 0-15 cm, support runner based on eight ball bearings guarantees smooth work of crossbar raising mechanism



patented positioning crank mechanism of crossbar support and post shift, cranks equipped with quick brakes to secure crossbar support and post against uncontrolled movements, measuring tape in C-shaped protective groove, height arrow with wide calibration range, special cassette with measuring tape easy to replace



check out the base pads on page 38



solid steel base fitted with wheels for moving the stand, synthetic guide rolls and steel side rails guarantee smooth and stable post movement

Code	Range [cm]	Certificate
STT-65	200-650	IAAF

Training stands POLANIK CLUB



weatherproof anodized aluminium profile, powder painted aluminium crossbar support



wide height range, well visible height arrow



crossbar positioning crank mechanism equipped with quick brake to secure the post against uncontrolled movements

post shift mechanism with fluent adjustment, equipped with quick brake



check out the base pads on page 38



steel base fitted with wheels for moving the stand



Code	Range [cm]
STT45-S293	160-450
STT60-S295	160-600

Pole rack

Steel powder painted, stores also crossbars, new flat base, economical in transport



Code	Unit
PR-S300	1 pc
PR-S300x2	set of 2 pcs

Crossbars



1. Competition crossbars made of fibreglass, plastic ends



2. Training crossbars made of fibreglass, rubber ends

	Code	Length [m]	Certificate
①	PW-450	4,5	IAAF
②	PT-045	4,5	

Base pads

Complete set for two bases, filled with PUR foam

	Code	Description
①	OP-STT65	for STT-65
②	OP-S293	for STT60-S295 and STT45-S293



Measuring device



Telescopic, 6 segments, made of aluminium profiles, equipped with level, max. height 8 m

Code	Range [m]
MDPV-8	up to 8

Pole bags

For 5 poles made of heavy duty, waterproof synthetic fabric



Code	Size [m]
PVB-5-S	3,10 - 3,90
PVB-5-M	4,00 - 4,80
PVB-5-L	4,80 - 5,35

Crossbar placer



Code	Description
WT-5	pair, range 2,7-5 m

Photo finish set - Competition

Complete system designed for all track events in the athletics, main element - professional photo finish camera with timing feature and colour module taking pictures with the speed of 1000 frames/s, special computer software assembling the pictures to form images of the finish line with competitors crossing it and their times, easy to read the competitors' times.
Set includes:

- photo finish digital camera LYNX® ETL-2000 with digital junction box and wiring
- timing module for ETL-2000
- colour module for ETL-2000
- lens type C 12.5-75 mm f1.2 for the camera
- tripod with head
- capture button with USB to serial converter
- start sensor normally closed NC
- starting revolver with impulse wire
- start signal cable 150 m on spool
- athletics competition management software
- laptop
- laser printer



Code	Description	Certificate
ZFFC	photo finish set	IAAF



Timing systems



Standard

Basic timing set for track events, recording resolution up to 1/1000 s, impulse from starting revolver initiates timing, tripped infrared beam of sports photocell stops time measuring, chronometer with memory up to 2000 results, thermal printer enables you to print out results.
Set contains:

- SLANDI® photocell
- tripods
- starting revolver with impulse wire
- chronometer with thermal printer PowerTime II
- start signal cable 150 m on spool

Code	Description
ZPCS	timing set – standard
ZPCS-K	timing set – standard with cascade

Standard with cascade

Set enriched with additional sports photocell, recording resolution up to 1/1000 s, impulse from starting revolver initiates timing, two infrared beams tripped simultaneously stop time measuring, chronometer with memory up to 2000 results, thermal printer enables you to print out results.
Set contains:

- two SLANDI® photocells
- cascade tripod holders
- tripods
- starting revolver with impulse wire
- chronometer with thermal printer PowerTime II
- start signal cable 150 m on spool



Measuring sets

Test throwing implements in terms of all technical requirements defined by the International Association of Athletics Federations



Javelin testing device. Allows you to locate javelin gravity centre, read out length data and position points where to check javelin diameters with the enclosed electronic calliper



Gravity centre testing device. Tested implements stay always under operator's control without risk of falling and causing damages or injuries, stable steel construction coated with hammer powder paint of high resistance and aesthetics value, lifting hardened steel sleeve, steel galvanized lever with comfortable grip



Hammer testing device. Unique device guarantees fair testing for all hammers regardless of operators' strength, the user tightens the hammer wire with two levers, the tightening force is automatically adjusted by the mechanism itself



Code	Description
ZP-S287	measuring set with scale
ZPM-S287	measuring set

Rack for measuring set



Makes implements testing very easy and comfortable, equipped with wheels, steel powder painted

Code	Description
S-289	rack for measuring set

Combo racks



Made of steel tubes and sections powder painted stationary and on wheels, hold 3 or 4 kinds of implements

Code	Type	Capacity
CR-4	stationary	6 hammers, 12 shot puts, 7 discs and 12 javelins
CR-3s	stationary	12 javelins, 13 discs and 24 shot puts
CR-3d	stationary	12 javelins, 12 shot puts and 26 discs
CR-4-W	on wheels	6 hammers, 12 shot puts, 7 discs and 12 javelins
CR-3s-W	on wheels	12 javelins, 13 discs and 24 shot puts
CR-3d-W	on wheels	12 javelins, 12 shot puts and 26 discs

Cart for modular grid platforms

Durable galvanized steel construction, big load up to 400 kg, universal platform 100 cm x 92,5 cm, wire netting container for small elements



Code	Capacity
WSZG-30	30 grid elements

Performance boards



Foamed PVC sheet, digital plastic units, supporting structure made of steel section and tubes powder painted, base equipped with wheels, modular post construction, can be blocked with handwheel in any position, cheap in transport, special steel frame protects the board in case of accidental overturn

Code	Description
T5-S273	5-digit board
T9-S271	9-digit board



Wind indicator



Synthetic fabric windsock, steel ring installed on ball bearing, steel construction, new flat base cheap in transport

Code	Description
WI-S301	wind indicator

Chalk stand

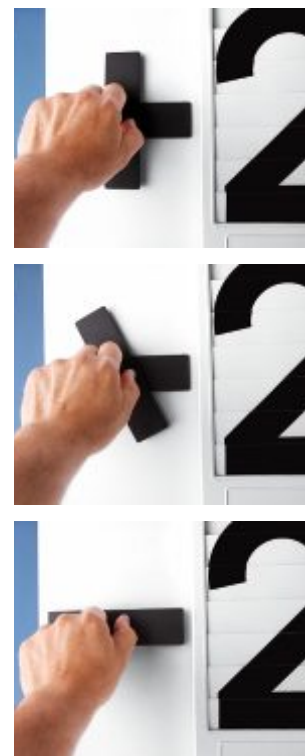
White fibreglass container can be closed when not used, steel powder painted pole and base, transported in parts



Code	Description
CS-241	stand for chalk

Wind speed board

Illustrates actual wind speed using two digits and +/- sign, clear arrangement of digital plastic units, waterproof foamed PVC board 10 mm thick screwed to steel frame, two-segment post with synthetic connector, rotation 360°, blocked in desired position with adjusting screw, stable round base yet light enough to be moved, steel powder painted



Code	Description
T3-S275	wind speed display board

Fibreglass distance markers

Square and triangular sections, digits on each side, cut-out handles, available individually and in ready sets



Code	Description
DM2-30	1 pc, square section, when ordering please specify the distance
DM2-30/14	set of 14 markers DM2-30, range 30 m - 90 m increase by 10 m for hammer, discus and javelin throwing
DM2-30/26	set of 26 markers DAM2-30, range 30 m - 90 m increase by 5 m for hammer, discus and javelin throwing
DM2S-30/16	set of 16 markers DM2-30, range 15 m - 22 m increase by 1 m for shot put



Code	Description
DM-35	1 pc, triangular section, when ordering please specify the distance
DM-35/14	set of 14 markers DM-35, range 30 m - 90 m increase by 10 m for hammer, discus and javelin throwing
DM-35/26	set of 26 markers DM-35, range 30 m - 90 m increase by 5 m for hammer, discus and javelin throwing
DMS-35/16	set of 16 markers DM-35, range 15 m - 22 m increase by 1 m for shot put

Sector lines



Designed for marking throwing sector, made of synthetic fabric, 15 staples for each 25 m included

Code	Description
SLW-25	white, 25 m
SLR-25	red, 25 m
SLY-25	yellow, 25 m

Sector line staples



Designed for sector line 5 cm wide

Code	Description
S-267	15 pcs

Dispensing spools

Designed for sector line 5 cm wide



Code	Capacity
Z50-S0302	2 x 25 m
Z100-S0299	2 x 50 m

Sector metal flag

Steel powder painted



Code	Description
SF-S0323	steel sector flag

Runway markers

Steel, powder painted in contrasting colours



Code	Description
RM-6	6 pcs, with base
RMP-S0298	6 pcs, push pin

Steel distance markers

Powder painted, digits on each side, rectangular with two pins and round with one pin



Code	Description
DM80-S0322	1 pc, rectangular plate with two pins, height 80 cm, when ordering please specify the distance
DM80/14-S0322	set of 14 markers DM80-S0322, range 30 m - 90 m increase by 10 m for hammer, discus and javelin throwing
DM80/26-S0322	set of 26 markers DM80-S0322, range 30 m - 90 m increase by 5 m for hammer, discus and javelin throwing



Code	Description
DM70-S0321	1 pc, round plate with one pin, height 70 cm, when ordering please specify the distance
DM70/7-S0321	set of 7 round markers, range 10 m - 22 m increase by 2 m for shot put
DM70/14-S0321	set of 14 round markers, range 10 m - 22 m increase by 2 m for shot put

Field event pole

To hold barrier rope in throwing events, made of 10 mm steel rod, galvanized



Code	Description
PL-S360	length 1 m

Field markers

Steel, powder painted



Code	Description
FMP-10	10 pcs, with base
FMP-15	15 pcs, with base



Code	Description
FMS-10	10 pcs, with pin
FMS-15	15 pcs, with pin

Measuring tapes



Code	Description
FMTC-10	fibreglass 10 m, closed reel
FMTC-20	fibreglass 20 m, closed reel
FMTC-30	fibreglass 30 m, closed reel
FMT0-30	fibreglass 30 m, open reel
FMT0-50	fibreglass 50 m, open reel
FMT0-100	fibreglass 100 m, open reel
SMTC-10	steel 10 m, closed reel
SMTC-20	steel 20 m, closed reel
SMTC-30	steel 30 m, closed reel
SMT0-30	steel 30 m, open reel
SMT0-50	steel 50 m, open reel
SMT0-100	steel 100 m, open reel

Record markers

Steel powder painted, handle for carrying, visible letters on each side, long distance model and smaller for shot put



Code	Description
WR-S291	world record marker for long distance throwing events
CR-S291	country record marker for long distance throwing events
RP-S291	Polish record marker for long distance throwing events
RM-S291	meeting record marker for long distance throwing events
WR-S292	world record marker for shot put
CR-S292	country record marker for shot put
RP-S292	Polish record marker for shot put
RM-S292	meeting record marker for shot put

Measuring cane



Provides easy measuring in the throwing events, galvanized steel bar, comfortable handle

Code	Length [m]
MC-08	0,8

Flag 2 m with base

Synthetic fabric flag, aluminium pole powder painted, steel base powder painted, available colours: green, yellow and red



Code	Colour
BFR-S0324	red
BFG-S0324	green
BFY-S0324	yellow

Officials' flags



Made of durable synthetic fabric, aluminium tube

Code	Colour
OFB-60	blue
OFR-60	red
OFW-60	white
OFY-60	yellow

Stopwatches



Code	Description
① W073	10 LAP/SPLIT memory, SEIKO®
② S056	100 LAP/SPLIT time memory, SEIKO®
③ S141	300 LAP/SPLIT time memory, SEIKO®
④ S149	300 LAP/SPLIT time memory, system with printer, SEIKO®
⑤ HS80TW	2 x 100 LAP/SPLIT memory, CASIO®

Winners platforms

Set of three separate elements made of fibreglass, sturdy heavy-walled construction having original shape, top surface covered with slip resistant rubber layer, side handle for easy carrying, stacked up or two inside the biggest one for easy storing and transport

Code	Description
① WP-01	for 3 persons
② WP-04	for teams

Detailed offer at www.polanik.com



SubtleSystem® - 50% of bioactive „ions of silver“ and 50% of polyamide. The grammage is 200 g/m², the inside surface looks like honeycomb construction, reduced tendency to pilling. It shapes up very well, it is glossy and has soft grip.

ZenSystem® - 50% of bioactive „ions of silver“, 42% of polyamide and 8% of lycra. The grammage is 190 g/m². It has outstanding grip and reduces wrinkles, quickly returns to its original shape. It is very elastic and springy so it is easier to find the right size for optimal fit.

WarmSystem® - 50% of bioactive „ions of silver“ and 50% of polyamide, the grammage is diminished to 180 g/m². A smooth pile forms on the surface of the fabric, giving a soft, velvet-like touch.

current offer and size chart at www.polanik.com

Women's apparel

Training tank top



ZenSystem® with ions of silver, flatlock seams eliminate skin grazes, reflective silver markings, universal, designed for various physical activities



Code	Description
BZS/D/004/PD	black, size from S to XXL
BZS/D/007/PD	white, size from S to XXL

Training T-shirt

SubtleSystem® with ions of silver, flatlock seams eliminate skin grazes, reflective silver markings, universal, very light T-shirt, designed for various physical activities



Code	Description
TSS/D/004/PD	black, size from S to XXL
TSS/D/007/PD	white, size from S to XXL

Competition singlet



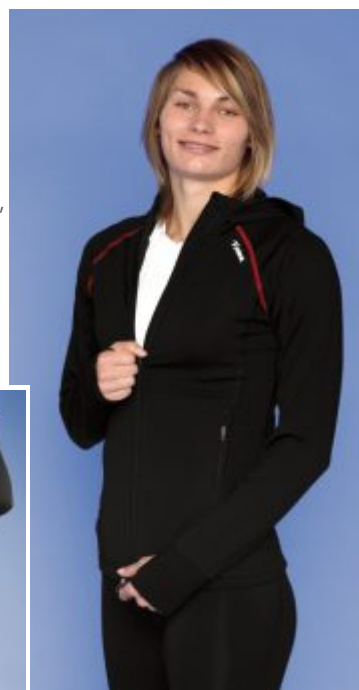
ZenSystem® with ions of silver, flatlock seams eliminate skin grazes, reflective silver markings, universal for running and various physical activities, used as competition apparel



Code	Description
KZS/D/004/PD	black, size from S to XXL
KZS/D/007/PD	white, size from S to XXL

Training jacket

WarmSystem® with ions of silver, flatlock seams, shoulder top without seams, full separating zip with abrasion panel, cuffs with thumb loops, two side zip pockets, reflective silver markings, universal, designed for various kinds of training, practical outer clothing



Code	Description
BLWS/D/004/PD	size from S to XXL

Training leggings

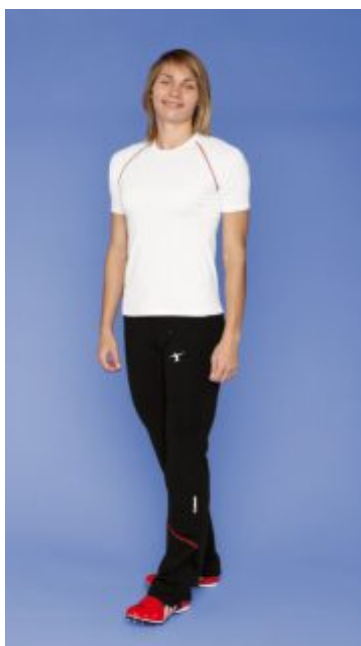
Leggings in two types of fabric: ZenSystem® and WarmSystem®, fabric with ions of silver, flatlock seams eliminate skin grazes, flat waistband with drawstring, flat anti-slip rubbers in leg bottom for better grip, lock down ankle zips, back zip pocket, reflective silver markings, universal, designed for various physical activities



Code	Description
① LZS/D/004/PD	ZenSystem®, size from S to XXL
② LWS/D/004/PD	WarmSystem®, size from S to XXL

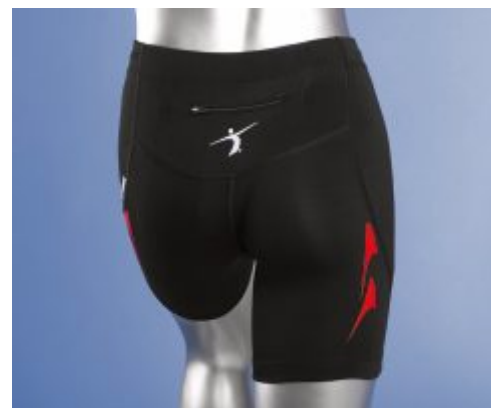
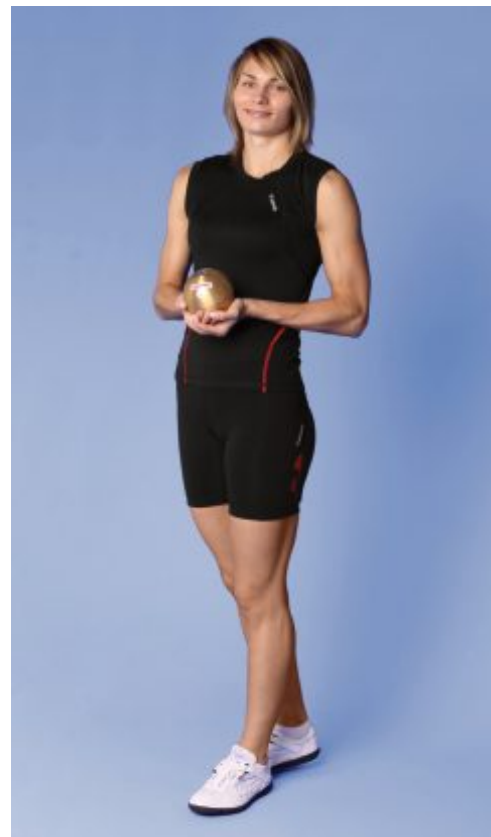
Training pants

WarmSystem® with ions of silver, flatlock seams eliminate skin grazes, flat waistband with drawstring lock down ankle zips, left side ankle zip pocket, back zip pocket, reflective silver markings, universal, designed for various kinds of training, practical outer clothing



Competition shorts

ZenSystem® with ions of silver, flatlock seams eliminate skin grazes, flat waistband with drawstring, flat anti-slip rubbers in leg bottom for better grip, back zip pocket, reflective silver markings, universal, designed for various physical activities, used as competition leggings



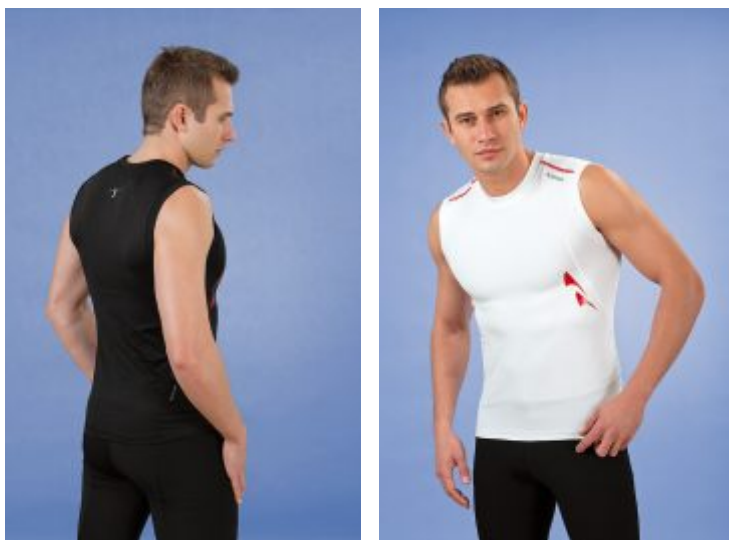
Code	Description
LSZS/D/004/PD	black, size from S to XXL

Code	Description
SWS/D/004/PD/164	height 164 cm, size from S to XXL
SWS/D/004/PD/170	height 170 cm, size from S to XXL
SWS/D/004/PD/176	height 176 cm, size from S to XXL
SWS/D/004/PD/182	height 182 cm, size from S to XXL
SWS/D/004/PD/188	height 188 cm, size from S to XXL

Men's apparel

Training tank top

ZenSystem® with ions of silver, flatlock seams eliminate skin grazes, reflective silver markings, universal, designed for various physical activities



Code	Description
BZS/M/004/PD	black, size from S to XXL
BZS/M/007/PD	white, size from S to XXL

Competition singlet

ZenSystem® with ions of silver, flatlock seams eliminate skin grazes, reflective silver markings, universal for running and various physical activities, used as competition apparel



Code	Description
KZS/M/004/PD	black, size from S to XXL
KZS/M/007/PD	white, size from S to XXL

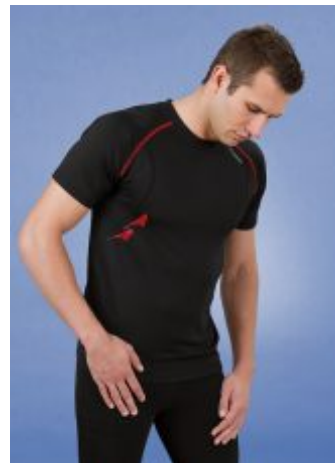
Training jacket

WarmSystem® with ions of silver, flatlock seams, shoulder top without seams, full separating zip with abrasion panel, cuffs with thumb loops, two side zip pockets, reflective silver markings, universal, designed for various kinds of training, practical outer clothing

Code	Description
BLWS/M/004/PD	size from S to XXL

Training T-shirt

SubtleSystem® with ions of silver, flatlock seams eliminate skin grazes, reflective silver markings, universal, very light T-shirt, designed for various physical activities



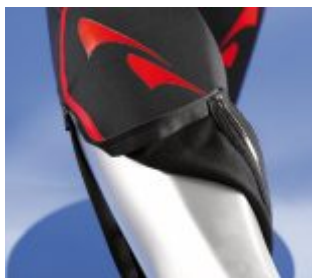
Code	Description
TSS/M/004/PD	black, size from S to XXL
TSS/M/007/PD	white, size from S to XXL



Training leggings



Leggings in two types of fabric: ZenSystem® and WarmSystem®, fabric with ions of silver, flatlock seams eliminate skin grazes, flat waistband with drawstring, flat anti-slip rubbers in leg bottom for better grip, lock down ankle zips, back zip pocket, reflective silver markings, universal, designed for various physical activities



	Code	Description
①	LZS/M/004/PD	ZenSystem®, size from S to XXL
②	LWS/M/004/PD	WarmSystem®, size from S to XXL

Competition shorts

ZenSystem® with ions of silver, flatlock seams eliminate skin grazes, flat waistband with drawstring, flat anti-slip rubbers in leg bottom for better grip, back zip pocket, reflective silver markings, universal, designed for various physical activities, used as competition leggings



Code	Description
LZS/M/004/PD	black, size from S to XXL

Training pants

WarmSystem® with ions of silver, flatlock seams eliminate skin grazes, flat waistband with drawstring lock down ankle zips, left side ankle zip pocket, back zip pocket, reflective silver markings, universal, designed for various kinds of training, practical outer clothing



Code	Description
SWS/M/004/PD/170	height 170 cm, size from S to XXL
SWS/M/004/PD/176	height 176 cm, size from S to XXL
SWS/M/004/PD/182	height 182 cm, size from S to XXL
SWS/M/004/PD/188	height 188 cm, size from S to XXL



Model P71001-A

Running spikes used for sprint,
 made of synthetic fibre and PU leather
 available in size from 36 to 45

Model P7012

Running spikes used for sprint,
 made of synthetic fibre and PU leather
 available in size from 36 to 45



Model 372-01

Running spikes used for sprint,
 made of synthetic fibre and PU leather
 available in size from 36 to 44

Model P9101B

Running spikes used for sprint,
 made of synthetic fibre and PU leather
 available in size from 36 to 45



Model P7302C

Running spikes used for middle and long distances,
 made of synthetic fibre and PU leather
 available in size from 36 to 46

Model P2101A

Running spikes used for middle and long distances,
 made of synthetic fibre and PU leather
 available in size from 37 to 45



Model P5605B

Running spikes used for middle and long distances,
 made of synthetic fibre and PU leather
 available in size from 37 to 45



Model 521-02

Spikes used for triple jump and long jump,
made of synthetic fibre and PU leather
available in size from 36 to 46

Model 524-01

Spikes used for long jump,
made of synthetic fibre and PU leather
available in size from 36 to 46



Model 5404-08

Spikes used for high jump,
made of synthetic fibre and PU leather
available in size from 36 to 46



Model 503-02

Spikes used for javelin throw,
made of synthetic fibre and PU leather
available in size from 37 to 47



Model 504-03

Throwing shoes used for discus, hammer and shot put,
made of synthetic fibre and PU leather
available in size from 41 to 47



Model M5301C

Training shoes used for jogging,
made of synthetic fibre and PU leather
available in size from 36 to 45



Model M9303B

Training shoes used for jogging,
made of synthetic fibre and microfiber
available in size from 36 to 46



Model M9300B

Training shoes used for jogging,
made of synthetic fibre and microfiber
available in size from 36 to 46



Javelin throw

Full Carbon Premium Line javelins	p. 3
javelin bag	p. 5
javelin rack	p. 5
javelin rack on wheel	p. 5
javelin tubes	p. 5
javelins / competition	p. 4
javelins / school	p. 5
javelins / training	p. 5

Discus throw

discus bag	p. 7
discus racks and rack on wheels	p. 8
discus throwing cage	p. 9
discus throwing circle	p. 9
discuses / competition carbon	p. 7
discuses / competition plastic	p. 7
discuses / training adjustable	p. 8
discuses / training plastic	p. 8
discuses / training rubber	p. 8
discuses / training TRIAL	p. 8
discuses / competition hard plywood	p. 7

Hammer throw

bag for hammer / weight/ shot put	p. 14
cage gate lift	p. 15
conversion circle discus-hammer	p. 15
discus and hammer throwing cage	p. 15
hammer bag	p. 14
hammer gloves	p. 13
hammer gloves / competition	p. 11
hammer measuring device	p. 14
hammer racks	p. 13
hammers / competition brass	p. 12
hammers / competition Premium Line	p. 11
hammers / competition stainless steel	p. 12
hammers / competiott steel	p. 12
hammers / competition Ziolkowski Gold, Silver, Black	p. 11
hammers / training steel	p. 13
handles / heavy hammers	p. 13
handles / hammer	p. 13
handles / with chain for throwing weight	p. 14
highland games throwing weights	p. 14
key for hammer	p. 13
key for throwing weight	p. 14
pillar shields	p. 15
throwing weights	p. 14
training weights	p. 14
transport case	p. 11

Shot put

bag for hammer /weight / shot put	p. 18
competition toe board	p. 19
indoor safety barriers	p. 20
indoor shot put circle with toe board	p. 20
indoor shot put mat	p. 20
self adhesive sector tape	p. 20
shot put circle	p. 19
shot put racks	p. 18
shot put return channel	p. 19
shots / competition brass	p. 17
shots / competition stainless steel	p. 17
shots / competition steel	p. 17
shots / training PVC	p. 18
shots / training steel	p. 18
shots / training TRIAL	p. 18
training toe board	p. 19

Track events

competition hurdle cart	p. 24
hurdles / competition aluminium	p. 23
hurdles / competition aluminium collapsible	p. 23
hurdles / competition steel-aluminium collapsible	p. 23
hurdles / padded top bar	p. 24
hurdles / spring back	p. 24
hurdles / step	p. 24
hurdles / training steel-aluminium and aluminium collapsible	p. 23
hurdles / training steel-aluminium one-piece frame	p. 23
lane markers	p. 25
lap counter	p. 24
mobility set for steeplechase barrier	p. 25
relay batons	p. 25
starter's stand	p. 24
starting block rack on wheel	p. 22
starting blocks / competition aluminium	p. 22
starting blocks / competition steel	p. 22
starting blocks / competition steel-aluminium	p. 22
starting blocks / school-training	p. 22
steeplechase barrier	p. 25
top boards	p. 24
top boards on request	p. 24
training hurdle cart	p. 24

Long and triple jumps

aluminium rake	p. 27
blanking covers for take-off board frames	p. 27

distance indicators	p. 27
sand leveller	p. 27
sand pit cover	p. 27
plasticine straps for indicator board	p. 27
take-off boards / competition	p. 27
take-off board / training	p. 27
take-off markers	p. 27

High jump

covers / for competition / club multicube / school landing areas	p. 30
covers / for monocube landing areas	p. 30
crossbars training and competition	p. 30
garages for landing areas	p. 31
landing areas / club monocube	p. 29
landing areas / club multicube	p. 29
landing areas / competition	p. 29
landing areas / school	p. 30
landing areas / school made of mats	p. 30
measuring device	p. 31
modular grid platforms	p. 30
stands / competition	p. 31
stands / school	p. 31

Pole vault

base pads / training	p. 38
blanking covers for boxes	p. 34
covers / for competition / multicube landing areas	p. 34
covers / for monocube landing area	p. 34
crossbar placer	p. 38
crossbar	p. 38
garage for landing area	p. 34
landing areas / club monocube	p. 33
landing areas / club multicube	p. 33
landing areas / competition	p. 33
measuring device	p. 38
modular grid platform	p. 34
pole bags	p. 38
pole racks	p. 38
pole vault boxes	p. 34
stand / competition electronically driven PV Polanik Premium	p. 35
stand / competition Polanik Professional	p. 36
stands / training Polanik Club	p. 37

Accessories

cart for modular grid	p. 41
chalk stand	p. 42
combo racks	p. 42
dispensing spools	p. 43
field event pole	p. 43
flag with base	p. 44
markers / distance fibreglass	p. 43
markers / distance steel	p. 43
markers / field	p. 43
markers / record	p. 44
markers / runway	p. 43
measuring cane	p. 44
measuring sets	p. 42
measuring tapes	p. 44
officials' flag	p. 44
photo finish set / competition	p. 40
performance boards	p. 42
rack for measuring set	p. 41
sector lines	p. 43
sector line staples	p. 43
sector metal flag	p. 43
stopwatches	p. 44
timing system standard	p. 40
timing system standard with cascade	p. 40
wind indicator	p. 42
wind speed indicators	p. 42
winners platforms	p. 44

Polanik Athletics Collection

men's competition shorts	p. 49
men's competition singlet	p. 48
men's training jacket	p. 48
men's training leggings	p. 49
men's training pants	p. 49
men's training tank top	p. 48
men's training T-shirt	p. 48
women's competition shorts	p. 47
women's competition singlet	p. 46
women's training jacket	p. 46
women's training leggings	p. 47
women's training pants	p. 47
women's training tank top	p. 46
women's training T-shirt	p. 46

Sport shoes Do - win

high jump spikes	p. 52
javelin spikes	p. 52
jogging shoes	p. 52
long jump spikes	p. 52
running spikes	p. 51
sprint spikes	p. 51
throwing shoes	p. 52
triple and long jumps spikes	p. 52